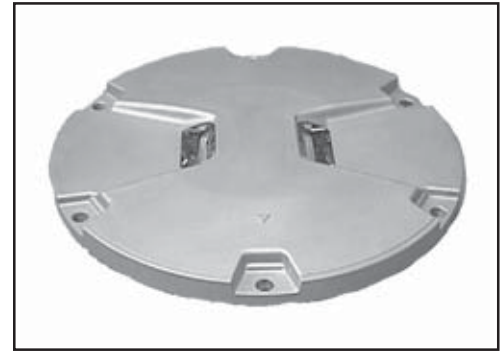


SIEMENS

L-852A & C Style 3 F-Range Series, Single-Lamp Taxiway Centerline Light



Compliance with Standards

FAA: L-852A & C AC 150/5345-46 (Current Edition)
ETL Certified

Uses

L-852A - Taxiway centerline on straight sections and clearance bar in category I and II applications

L-852C - Taxiway centerline on straight section and clearance bar in category III applications

Use of a single lamp minimizes load on constant current regulator. See SAS catalog sheet 2002 if individual control of each lamp is required.

Features

- Low-energy/long-life halogen lamps are 45W with a rated life of 1,000 hours at 6.6A and in excess of 4,000 hours in practical use
- Designed and built with simplicity and ease of maintenance in mind

Spare Components

Description	Part No.
Cable clamp	4071.50.090
Cord set, L-823	73A0133-23
Cord set grommet	63A1014
Cord set terminal, female	6111.87.140
Film disc cutout	47A0118
Film disc spring	4071.50.130
Filter, green	63A0985
Filter, red	63A1059
Filter, yellow	63A1058
Filter retainer	4071.57.160
Filter spring clip	4071.50.160
Grommet, optical assembly vibration isolator	63A0222
Inner cover, one cord set application*	4071.50.082
Lamp assembly, 45W/PK30d, 6.6A	2990.48.360
Lamp spring	4071.50.581
O-ring, inner cover seal	7080.90.335
O-ring, pressure release screw	63B0267-011
Pressure release screw	60A2602
Prism, L-852A	1428.00.180
Prism, L-852C	1428.00.170
Prism gasket sleeve	4071.50.430
Prism keeper plate	4071.50.450
Reflector/lamp support	4071.50.481
Seal, prism keeper plate	4071.50.440
Terminal block assembly w/o film disc cutout	44A6112-1
Terminal block assembly with film disc cutout	44A6112-2
Top cover, unidirectional	62A2170-1
Top cover, bidirectional	62A2170-2

* Does not include cord set

Ordering Code

44A4827-XXX1

Base Mounting

- 1 = L-852A, L-823 cord set for standard base
- 2 = L-852A, lead with no plugs, shallow base included
- 3 = L-852C, L-823 cord set for standard base
- 4 = L-852C, lead with no plugs, shallow base included

Filter Colors

- 1 = Yellow/Yellow (ETL Certified)
- 2 = Green/Green (ETL Certified)
- 3 = Yellow/Green (ETL Certified)
- 4 = Red/Red*
- 5 = Green/Obscured (ETL Certified)
- 6 = Yellow/Obscured (ETL Certified)
- 7 = Red/Obscured*
- 8 = Green/Red*
- 9 = Yellow/Red*

Film Disc Cutout

- 1 = Included
- 2 = Not Included

Lamp

- 1 = 45W 6.6A

Note

* Color configuration not recognized by the FAA

Features (Continued)

- Light channel in front of prism windows protects prisms from damage and prevents rubber buildup thereby maintaining optimal light output
- Low-temperature lights. Temperature rise at center of top cover remains below the FAA-specified limit of 320°F (160°C).
- Fixture uses aluminum alloy cover and inner cover, stainless steel hardware, and aluminum alloy and stainless steel optical assembly

Packaging

In cardboard box:	7 x 13 x 13 in (17.8 x 33 x 33 cm)
Weight with packing:	15.3 lb (6.94 kg)
Weight without packing:	12.3 lb (5.58 kg)

The information contained in this document is subject to change without notice. Siemens reserves the right to make changes and improvements to its products and assumes no responsibility for making these modifications on any equipment previously sold.